

# INVITATION FOR PIANO SYLLABUS COMPOSITIONS

## ROYAL IRISH ACADEMY OF MUSIC



The Royal Irish Academy of Music wishes to invite composition submissions, for possible inclusion in the prescribed list of pieces for Local Centre Pianoforte Grade Examinations, Elementary to Grade V.

Successful compositions will be selected on the basis of :

i) suitability of the submission for the appropriate technical development of each

grade for the RIAM Local Centre piano syllabus; and

ii) interest and appeal of the composition, especially for the young pianist.

For earlier grades, (up to grade 1) applicants may consider arranging familiar tunes suitable for younger players.

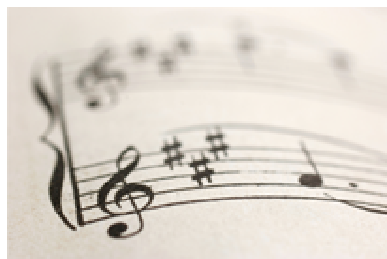
A brief description of the technical standards, as well as the fee scale and other requirements are available on [www.riam.ie/local-centre-and-diploma-examinations.html](http://www.riam.ie/local-centre-and-diploma-examinations.html)

Compositions may be submitted in hard copy or by email.

Please post submissions to:  
The Local Centre Manager  
Royal Irish Academy of Music  
36-38 Westland Row  
Dublin 2.

If work is being submitted by email please save file in pdf format and send to [theresadoyle@riam.ie](mailto:theresadoyle@riam.ie) with 'Piano Composition' in the subject line.

The closing date for receipt of submissions is 30th November 2010.



# SUBMISSION GUIDELINES

## PIANO SYLLABUS COMPOSITION

### Royal Irish Academy of Music

If you require any further information, please email  
[seniorexaminers@riam.ie](mailto:seniorexaminers@riam.ie)

**TECHNICAL GUIDELINES BY GRADE.** It is not essential to include each grade element in each piece.  
 Each grade may also include elements from the preceding grades.

GRADE	GENERAL CRITERIA
Elementary Grade	5-finger position. Mostly key of C; occasionally 1 sharp or flat key signature. Mostly crotchets or longer note-values; occasional quavers. Mostly hands separately; occasionally hands together. Mostly single notes; occasional simple 2-note chord. Simple dynamics or none. 8 – 12 bars. Simple time signatures.
Preliminary Grade	Mostly 5-finger position; occasional change to nearby 5-finger position. Maximum 1 sharp or flat key signature. Can include simple quaver passages. Mostly hands together; occasional hands separate passages. Occasional chords up to 3 notes in close position. More dynamics, including occasional <i>cresc</i> or <i>dim</i> ; accents. Maximum 16 bars.
Primary Grade	Simple changes of hand position. Maximum 2 sharps or flats key signature; occasional accidentals. More quavers; simple syncopation. Generally hands together. Chords up to 3 notes in close position. Maximum 24 bars. Simple tempo changes.
Grade 1	Freer movement over range of approximately 2 octaves in each hand. Simple modulations. Some semi-quavers, grace-notes. Occasional chords covering maximum interval of a 6 <sup>th</sup> . Maximum 32 bars. Possibly 6/8 time
Grade 2	Wider range of movement – approximately 3 octaves in each hand. Maximum 3 sharps or flats key signature. Some simple ornamentation. More chords covering maximum interval of a 7 <sup>th</sup> . Maximum 40 bars.
Grade 3	Approximately 4 octave range each hand. More rhythmic complexity, including triplets. Wider range and subtlety in dynamics. Maximum 54 bars. Simple use of pedal.
Grade 4	No limit to range, but no excessive leaps. Wider range of ornamentation. Maximum 4 sharps or flats key signature. Maximum 62 bars. Legato pedalling. Compound time signatures.
Grade 5	Maximum 80 bars. More layered textures. More extreme tempo markings.

Submissions must reach the Local Centre Manager no later than 30<sup>th</sup> November 2010

- Submissions may be prepared in *Finale* or *Sibelius*. Applicants may submit their work(s) either in hard copy to the Local Centre Manager (RIAM) or by email to: [theresadoyle@riam.ie](mailto:theresadoyle@riam.ie). All attachments should be in pdf format only.
- Each submission must be clearly marked with the composer's name, contact details and intended piano grade.
- Applicants may submit one or more compositions for a specified grade but it is not necessary to submit for all grades unless the applicant chooses to do so. (For example, you may submit two pieces for Grade 1 and one for Grade 4)
- Successful applicants will be notified by 1<sup>st</sup> May 2011.
- If selected, the composition will be printed in a RIAM Pianoforte Album and the copyright will remain the property of the RIAM for that publication. Copyright will revert to the composer after that publication.
- Successful compositions will receive the following remuneration, payable on completion of score for printing.

Elementary/ preliminary/ primary .....	€100	Grade 3 & 4 .....	€300
Grades 1 & 2 .....	€200	Grade 5 .....	€400