

Local Centre Examination Paper

Theory Grade 1

November 2016

Royal Irish  
Academy of  
Music

Time allowed : 1 hour 30 minutes

Candidates should answer all questions. All answers must be written on this paper.

Candidate's name

Total Marks 100

1 Draw the notes which match these words. The first one on each line is done for you.

C A B      C A F E      B A D G E

B A G      B A G G A G E      B E A D

10

2 Below each note or rest write its time name and the number of beats it gets. The first one is done for you.

Time name: Quaver

Beats: half beat

Time name: \_\_\_\_\_

Beats: \_\_\_\_\_

10

3 a Add one **note** at each place marked \* to make the bar complete.

A musical staff in 4/4 time. The first bar contains four eighth notes. The second bar contains a quarter note followed by three eighth notes. The third bar contains a quarter note followed by three eighth notes. The fourth bar contains a quarter note followed by three eighth notes. The fifth bar contains a quarter note followed by three eighth notes. There are five asterisks above the staff, one in each of the five bars, marking empty spaces where a note should be added to complete the bar.

b Add one **rest** at each place marked \* to make the bar complete.

A musical staff in 3/4 time. The first bar contains two eighth notes followed by a quarter note. The second bar contains a quarter note followed by two eighth notes. The third bar contains a quarter note followed by two eighth notes. The fourth bar contains a quarter note followed by two eighth notes. The fifth bar contains a quarter note followed by two eighth notes. The sixth bar contains a quarter note followed by two eighth notes. There are six asterisks above the staff, one in each of the six bars, marking empty spaces where a rest should be added to complete the bar.

10

4 a Add the missing time signature to each of these pieces.

Musical staff for 'Carol'. It starts with a treble clef and a key signature of one sharp (F#). The melody consists of a series of eighth and quarter notes.

Carol

Musical staff for 'Eben'. It starts with a treble clef. The melody consists of a series of eighth and quarter notes.

Eben

10

b Add the missing barlines to each of these melodies.

Musical staff for 'Bennett'. It starts with a bass clef and a 2/4 time signature. The melody consists of a series of eighth and quarter notes.

Bennett

Musical staff for 'Prokofiev'. It starts with a treble clef and a 4/4 time signature. The melody consists of a series of eighth and quarter notes.

Prokofiev

10

5 Write out this tune in the key of C major. The first bar is done for you.

Musical staff in 3/4 time. The first bar is completed with notes and dynamics markings: *d m s l s f m r m f s m r d*.

Musical staff in 3/4 time. The first bar is completed with notes and dynamics markings: *d m s l s f m r m f s m r d*.

10

6 a Write the scale of G major **going up** in the treble clef. Include the key signature.

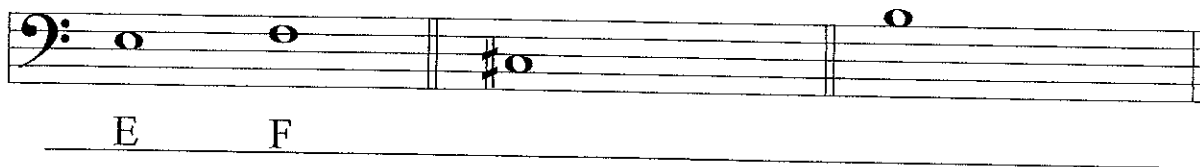


b Write the scale of C major **going down** in the bass clef. Mark the semitones with slurs.



10

7 Beside each note draw another note which is a semitone higher. Write the letter names under both notes. The first one on each line is done for you.



10

Answer questions 8, 9 and 10 about this piece.

Carol



- 8 (i) Write a word over bar 1 to show that the music is to be played at a moderate speed.  
 (ii) Write letters below bar 1 to show that the music is to be played moderately loud.  
 (iii) Draw a sign below bars 3 & 4 to show that the music gets gradually softer.  
 (iv) Write a letter below bar 5 to show that the music is to be played softly.  
 (v) Draw a sign at the end of the piece to show that the music must be repeated.

9 (i) Name the key of the piece: \_\_\_\_\_

10

(ii) Fill in the missing time signature.

(iii) Show another way of writing the time signature: \_\_\_\_\_

(iv) Draw a circle around two notes which are a tone apart. Write the letter T above the circle.

(v) Draw a circle around two notes which are a semitone apart. Write the letter S above the circle.

10

10 (i) How many times does the pattern  $\text{♩} \cdot \text{♩}$  occur? \_\_\_\_\_

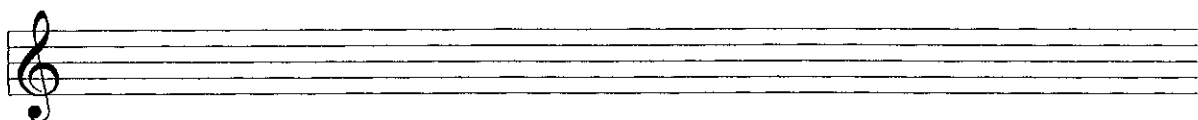
(ii) What is the time name of the shortest note? \_\_\_\_\_

What is its value? \_\_\_\_\_

(iii) What is the time name of the longest note? \_\_\_\_\_

What is its value? \_\_\_\_\_

(iv) Copy out bars 1 - 4 on the staff below. Include the key signature and the time signature.



10