

Time allowed : 1 hour

Candidates should answer all questions. All answers must be written on this paper.

Candidate's name

Total Marks 100

1 Draw each note on the staff. Make all notes semibreves. The first one is done for you.

A C D F E

G D F A C

10

2 a Write the number of beats under each note and rest. The first one is done for you.

2 beats

b Draw stems to make these notes minims.

10

Preparatory continued

3 Add the barlines to these melodies.

Old Mac Donald



Row your boat



10

4 Add a time signature to each of these melodies.

Waltz



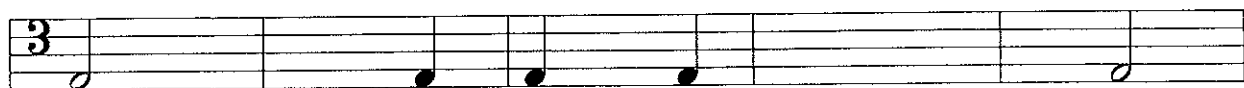
Yankee Doodle



10

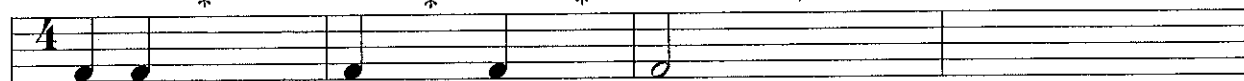
5 a Draw one note at each \* to complete each bar.

\* \* \* \* \*



b Draw one rest at each \* to complete each bar.

\* \* \* \* \*



10

Preparatory continued

- 6 Draw a treble clef (G clef) or bass clef (F clef) before each note to make it match the letter below it. The first two are done for you.

A musical staff with six notes. The first note is on a bass clef and the second is on a treble clef. The notes are: E (bass clef, 2nd line), F (treble clef, 1st line), F (treble clef, 2nd line), C (treble clef, 3rd line), B (treble clef, 4th line), and A (treble clef, 5th line). Below each note is a letter: E, F, F, C, B, A.

A musical staff with six notes. The notes are: G (bass clef, 2nd line), E (treble clef, 1st line), G (bass clef, 2nd line), C (treble clef, 3rd line), D (treble clef, 4th line), and A (bass clef, 2nd line). Below each note is a letter: G, E, G, C, D, A.

10

- 7 Make up a four bar rhythm using these notes and rests:

A rectangular box containing four musical symbols from left to right: a quarter note, a half note, a quarter rest, and a half rest.

A musical staff with a 4/4 time signature in the first bar. The staff is divided into four empty bars for writing a rhythm.

10

Answer questions 8, 9 and 10 about this tune called 'I'm a little Teapot'.

Moderato

8 Complete these sentences:

This tune is written in the \_\_\_\_\_ clef; its other name is the \_\_\_\_\_ clef. There are \_\_\_\_\_ beats in each bar; this is called the \_\_\_\_\_ signature. The letter name of the first note is \_\_\_\_\_. The letter name of the last note is \_\_\_\_\_. The longest rest is called a \_\_\_\_\_ rest; it gets \_\_\_\_\_ beats. There are \_\_\_\_\_ crotchet rests in this tune. There are \_\_\_\_\_ minim notes in this tune.

10

9 Draw a circle around either T (True) or F (False):

- (i) There are no half notes in this tune.    T    F
- (ii) Bars 1 and 9 are the same.                    T    F
- (iii) The highest note is F.                        T    F
- (iv) Bar 7 moves by leap only.                    T    F
- (v) Bar 11 moves by step only.                    T    F

10

10 Copy the last line of the tune onto the staff below.

10