

**Local Centre Examination Paper**

**Theory Grade 8**

**November 2017**

Time allowed : 3 hours

Candidates should answer all questions. All answers must be written on this paper.

Royal Irish  
**Academy of  
Music**

Candidate's name
------------------

Total Marks 100
-----------------

**N.B.** Answer **either** question 1a **or** 1b. Do **not** answer both questions.

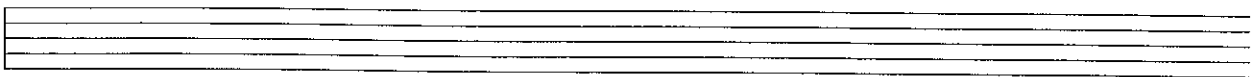
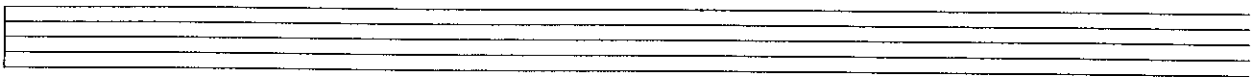
- 1a** Using this opening, compose a 16-bar melody. Include a modulation to any closely related key. Phrase the completed melody. Add tempo and expression marks. (Copy to the staves below.)



Or

- b** Compose a tune for this verse. Write each syllable under the note(s) to which it is to be sung.

The goblins prowl, the dogs will howl,  
The spooky things are seen.  
A witch in flight, the moon is bright,  
Tonight is Halloween. (Anon.)



- 2 Choose suitable chords to accompany the following melody. Indicate the chords by roman numerals. Write in the complete bass line adding some passing or auxiliary notes where suitable (inner parts are not required).

Irish melody

Numerals \_\_\_\_\_

Numerals \_\_\_\_\_

15

- 3 Analyse the chords implied by the given soprano and bass lines by using roman numerals. Complete the harmonisation by adding parts for alto and tenor voices.

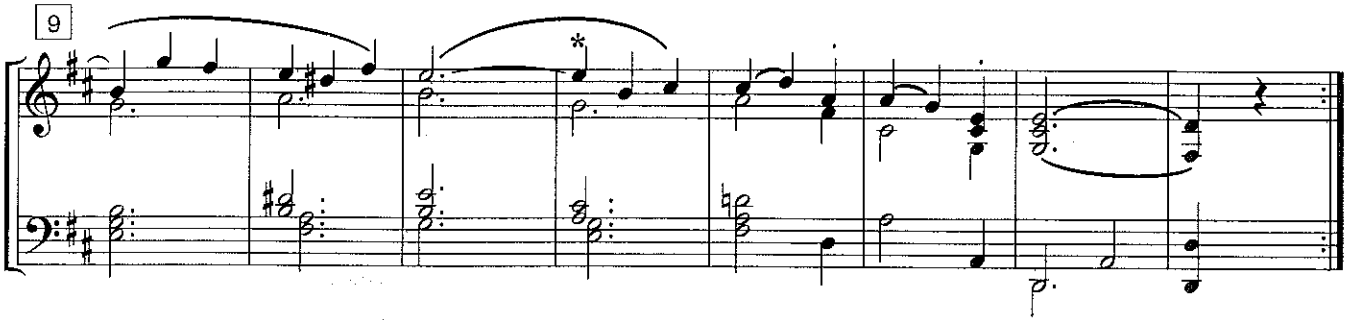
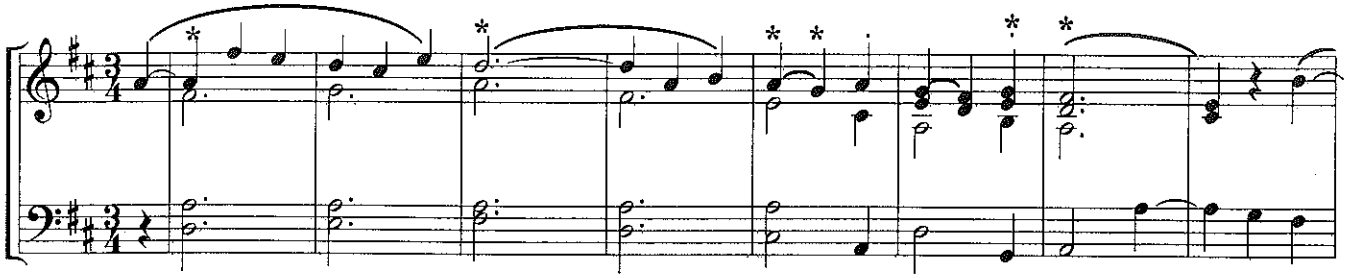
Numerals \_\_\_\_\_

15

- 4 Complete the treble over the given bass to create a simple two-part texture.

15

5 Study the following extract from a Beethoven piano sonata, then answer the questions which follow.



- a Name the tonic key: \_\_\_\_\_
- b Name the key to which the music modulates in bars 9 - 11: \_\_\_\_\_
- c Name the type of cadence that occurs midway through the extract (bar 7 to the first beat in bar 8):  
\_\_\_\_\_
- d Fully describe the chords marked with \*. Use roman numerals and include b or c to indicate any inversions used. All are in the tonic key.  
 bar 1 \_\_\_\_\_ bar 3 \_\_\_\_\_ bar 5, beat 1 \_\_\_\_\_ bar 5, beat 2 \_\_\_\_\_  
 bar 6, beat 3 \_\_\_\_\_ bar 7 \_\_\_\_\_ bar 12, beat 1 \_\_\_\_\_
- e On the score circle the non-chord note in bar 2  
and in bar 4
- f On the first beat in bar 6, is the uppermost note (G) an accented passing note or a suspension?  
\_\_\_\_\_

Score extract

Haydn

The image shows a musical score extract for Haydn, featuring various instruments. The score is written in 2/4 time and includes dynamics such as *p* (piano) and *f* (forte). The instruments listed are Flauti, Oboe, Clarinetti in A, Fagotti, Cor. in G, Tr. in C, Timp., Violini I, Violini II, Viola, and Violoncello e Contrabbasso. The score includes first and second endings (I. and zu 2) and features sixteenth-note passages in the Flauti and Violini I parts.

On page 4 is an extract from a symphony by Haydn. Study the score. Then answer the following questions.

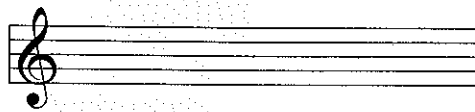
**6 a (i)** Give the English name of each of the brass instruments on the score.

\_\_\_\_\_

(ii) Which of these is a transposing instrument?

\_\_\_\_\_

**b** Clarinets are pitched in A; rewrite bar 2 of the clarinet part at concert pitch.

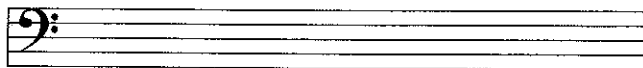


**c** Explain *zu 2* \_\_\_\_\_

**d** In bar 4 the flute part is doubled an octave lower by \_\_\_\_\_

**e (i)** Which instrument plays in the alto clef? \_\_\_\_\_

(ii) Transcribe bars 1 & 2 of this instrument to the bass clef at the same pitch.



**f** In bar 2 clarinets and \_\_\_\_\_ play an octave apart.

**g** How many woodwind instruments are needed to play this extract? \_\_\_\_\_

7 Answer questions **a, b and c.**

**a** Explain two of the following:

**Oratorio      Lieder      String Quartet      Concerto**

1. \_\_\_\_\_  
\_\_\_\_\_  
\_\_\_\_\_

2. \_\_\_\_\_  
\_\_\_\_\_  
\_\_\_\_\_

**b** Name the composer of any four of these well-known compositions.

- William Tell \_\_\_\_\_
- Song without Words \_\_\_\_\_
- Carmen \_\_\_\_\_
- Swan Lake \_\_\_\_\_
- The New World Symphony \_\_\_\_\_
- Night on the Bare Mountain \_\_\_\_\_
- Don Quixote \_\_\_\_\_

**c** Match each composer's name in list 1 to the type of composition in list 2 for which he is noted.

List 1: Verdi    Paganini    Chopin    Brahms

List 2: Symphony    Violin music    Piano music    Opera

Composer	Type of work
_____	_____
_____	_____
_____	_____
_____	_____