

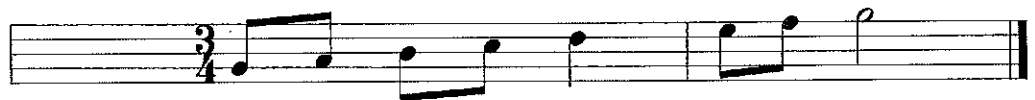
Time allowed : 2 hours


Candidates should answer all questions. All answers must be written on this paper.

Candidate's name

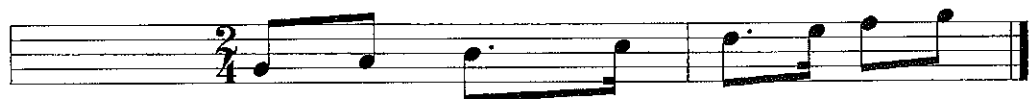
Total Marks 100

1 Add a clef, a key signature, and any necessary accidentals to make each named scale.

G melodic minor 

E♭ major 

A major 

B harmonic minor 

E major 

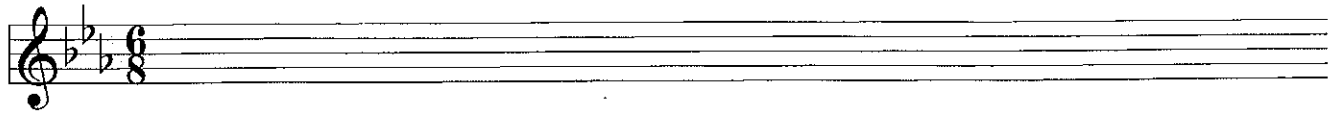
10

2a Complete each bar by adding the necessary rest or rests where \* is marked.

Beethoven

**b** Rewrite this extract with the notes correctly grouped; change the stem direction where needed.

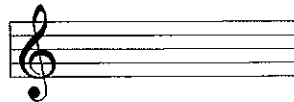
Mozart



10

**3** Name the key of the following melody. \_\_\_\_\_

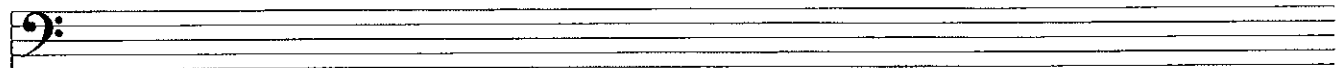
Draw its tonic triad with accidentals.



"Waltzing Matilda"



Now transpose the melody down an octave, writing it in the bass clef. Include the key signature.



10

**4a** Add a time signature to each of these extracts. Describe each time signature as Simple or Compound, and as Duple, Triple or Quadruple.

J.S. Bach



\_\_\_\_\_

Spain



\_\_\_\_\_

**b** Add bar lines to each of these extracts.

Brahms



Franz



10

5a Fully describe each circled interval in this A minor extract.

A musical staff in 4/4 time, A minor key. The notes are: A4 (quarter), B4 (quarter), C5 (quarter), B4 (quarter), A4 (quarter), G4 (quarter), F4 (quarter), E4 (quarter), D4 (quarter), C4 (half). Five intervals are circled: A-B (major 2nd), B-C (minor 2nd), C-B (major 2nd), B-A (major 2nd), and A-G (major 2nd).

\_\_\_\_\_

b Write the following intervals above the given notes.

Five measures of a bass staff with the following intervals indicated below:

- major 6th
- minor 3rd
- major 3rd
- perfect 4th
- major 7th

10

6a Add accidentals to this melody so that it is in the key of A major.

Schubert

A musical staff in 6/8 time with the following notes: A4 (quarter), B4 (quarter), C5 (quarter), B4 (quarter), A4 (quarter), G4 (quarter), F4 (quarter), E4 (quarter), D4 (quarter), C4 (half). The word "etc." is written at the end of the staff.

b Name the keys of these tonic triads.

Six tonic triads are shown in alternating treble and bass clefs:

- Treble clef: F4, A4, C5 (F major)
- Bass clef: C3, E3, G3 (C major)
- Treble clef: Bb4, D5, F5 (Bb major)
- Bass clef: F#3, A#3, C4 (F# major)
- Treble clef: Bb4, D5, F5 (Bb major)
- Bass clef: C3, E3, G3 (C major)

\_\_\_\_\_

10

7 Think through the sound of the following phrase in A minor. Then write another 2-bar phrase to finish the tune. Finally, add phrase marks and a tempo mark.

A musical staff in 4/4 time, A minor key. The notes are: A4 (quarter), B4 (quarter), C5 (quarter), B4 (quarter), A4 (quarter), G4 (quarter), F4 (quarter), E4 (quarter), D4 (quarter), C4 (half).

10

Grade 4 continued

Answer questions 8, 9 and 10 in relation to this keyboard piece by Hofmann.

Allegro ♩ = 120

- 8 (i) Name the minor key as indicated by the key signature: \_\_\_\_\_  
 (ii) Circle an accidental belonging to this key. Its letter name is: \_\_\_\_\_.  
 (iii) Circle an accidental **not** belonging to this key. Its letter name is: \_\_\_\_\_.  
 (iv) Name any one bar where there is an octave leap: bar \_\_\_\_\_  
 (v) Name the interval formed between the **last two notes** of the melody: \_\_\_\_\_.

10

9 Explain each of the following:

- Allegro** \_\_\_\_\_  
 ♩ = 120 \_\_\_\_\_  
**poco rit.** \_\_\_\_\_  
**a tempo** \_\_\_\_\_  
**mf** \_\_\_\_\_

10

10 Complete these sentences:

- (i) Bars 1 - 4 are repeated in bars \_\_\_\_ - \_\_\_\_.  
 (ii) The loudest bar in the tune is bar \_\_\_\_\_.  
 (iii) A tie is used \_\_\_\_\_ times.

(iv) Rewrite bars 11 and 12 in notes of half the value. Complete the new time signature.

10