

Candidate's name

Total Marks 100

N.B. Answer **either** question 1a **or** 1b. Do **not** answer both questions.

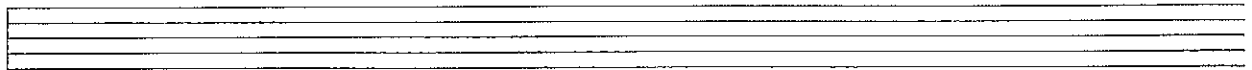
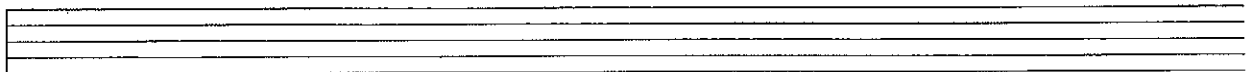
1a Using this opening, compose a 16-bar melody. Include a modulation to any closely related key. Phrase the completed melody. Add tempo and expression marks. (Copy to the staves below.)



Or

b Compose a tune for this verse. Write each syllable under the note(s) to which it is to be sung.

"The sun goes down, the stars peep out.
And long slim shadows flit about.
In velvet shoes the quiet dark
Comes stepping soft o'er wood and park." (Elizabeth Gould)



- 2 Choose suitable chords to accompany the following melody. Indicate the chords by roman numerals. Write in the complete bass line adding some passing or auxiliary notes where suitable (inner parts are not required).

Lento

French folk melody

Numerals

Numerals

- 3 Analyse the chords implied by the given soprano and bass lines by using roman numerals. Complete the harmonisation by adding parts for alto and tenor voices. 15

Numerals

- 4 Complete the treble over the given bass to create a simple two-part texture. 15

5 Study the following Hymn tune, then answer the questions which follow.

Bangor

(i) Name the tonic key: _____

(ii) Name the keys to which the music modulates in the boxed areas marked *x* and *y*:

x _____ *y* _____

(iii) Name the type of cadence which ends the Hymn : _____

(iv) Fully describe the chords marked with *. Use roman numerals and include b, or c to indicate any inversions used. All are in the tonic key.

upbeat to bar 1 _____ . bar 1, beat 2 _____ . bar 4, beat 4 _____ . bar 5, beat 1 _____ .

bar 6, beat 4 _____ . bar 7, beat 3 _____ .

(v) Describe each of the circled notes in bars 2, 5 and 7 as either unaccented passing note, accented passing note, suspension or auxiliary note:

Soprano, bar 2 _____ Soprano, bar 5 _____

Bass, bar 7 _____ Alto, bar 7 _____

This musical score extract features the following instruments and parts:

- Fl.** (Flute): Treble clef, starting with a *sm* (sustained) marking.
- Ob.** (Oboe): Treble clef, playing a rhythmic pattern.
- Cl.** (Clarinet): Treble clef, playing a rhythmic pattern.
- Fg.** (Bassoon): Bass clef, playing a rhythmic pattern.
- Cor.** (Cor Anglais): Treble clef, playing a rhythmic pattern.
- Tr.** (Trumpet): Treble clef, playing a rhythmic pattern.
- Trb.** (Trombone): Bass clef, playing a rhythmic pattern.
- Tb.** (Tuba): Bass clef, playing a rhythmic pattern.
- Timp.** (Timpani): Bass clef, playing a rhythmic pattern. Includes the instruction *Muta A, D*.
- Trgl.** (Triangle): Treble clef, playing a rhythmic pattern.
- VI.I** (Violin I): Treble clef, playing a melodic line.
- VI.II** (Violin II): Treble clef, playing a melodic line.
- Vla.** (Viola): Bass clef, playing a melodic line.
- Vc.** (Violoncello): Bass clef, playing a melodic line.
- Vc** (Violoncello): Bass clef, playing a rhythmic pattern.
- Cb.** (Contrabass): Bass clef, playing a rhythmic pattern.

The score includes dynamic markings such as *sf* (sforzando) and *ff* (fortissimo). A *sm* marking is present at the top of the first measure. The key signature is one sharp (F#).

6 The score extract on page 4 is from Smetana's symphonic poem 'Vltava'. Study the score, then answer the following questions.

a Give the full English name for the instruments using the following abbreviations. State the family of instruments to which each belongs.

Cor. _____ belongs to: _____

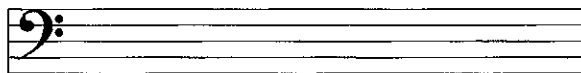
Trb. _____ belongs to: _____

Trgl. _____ belongs to: _____

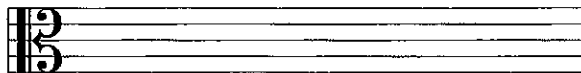
Fg. _____ belongs to: _____

b i) How many woodwind players are needed to play in this score? _____
ii) How many brass players are needed? _____

c Write out the first bar of the viola part on the bass staff.



d Write out bar 3 of the viola part as it would be played.



e Name another C clef on the score and name the instrument using it:

_____ clef, used by: _____

f Explain: Muta in A, D in bar 4 of the Timpani part. _____

g The chord used throughout bar 1 is a chord of G major. Name the chord repeated throughout the remaining bars: _____.

15

7 Answer questions a, b and c.

a Explain two of the following:

Song cycle Opera Symphony Recitative

1. _____

2. _____

b Name the composer of any four of these well-known compositions.

Nutcracker _____
Carnival of the Animals _____
Madame Butterfly _____
Academic Festival Overture _____
Minute Waltz _____
Peer Gynt Suite _____
Hebrides Overture _____

c Match each composer's name in list 1 to the type of composition in list 2 for which he is noted.

List 1: Puccini Strauss Tchaikovsky Schumann

List 2: Waltz Ballet Piano music Opera

Composer	Type of work
_____	_____
_____	_____
_____	_____
_____	_____