

Time allowed : 1 hour 30 minutes

Candidates should answer all questions. All answers must be written on this paper.

Candidate's name

Total Marks 100

1 Name each of the notes below. The first one on each staff is done for you.

E _____

C _____

10

2 Rewrite these notes correctly grouped on the staff below.
Change the direction of the stems within the group if necessary.

JS Bach

10

3 a Complete each bar by adding one rest * .

Diabelli adapted

b The melody below has four pairs of tied notes. Under each pair write the number of beats for which the sound lasts.

4 Name the key to which each key signature belongs. Then draw its tonic triad.

5 a Describe the distance between these notes as tone or semitone.

b Add accidentals to put the following melody into G major.

Franck

6a Add the time signature to each melody. Describe each as Duple, Triple or Quadruple.

JS Bach



A musical staff in treble clef with a key signature of one sharp (F#). The melody consists of 10 notes: G4, A4, B4, C5, B4, A4, G4, F#4, E4, D4. There are two horizontal lines below the staff for a time signature.

Satie



A musical staff in treble clef with a key signature of two sharps (F# and C#). The melody consists of 8 notes: G4, A4, B4, C5, B4, A4, G4, F#4. There are two horizontal lines below the staff for a time signature.

Franck



A musical staff in treble clef with a key signature of one sharp (F#). The melody consists of 10 notes: G4, A4, B4, C5, B4, A4, G4, F#4, E4, D4. There are two horizontal lines below the staff for a time signature.

b Add the missing barlines to this tune.

Schubert



A musical staff in treble clef with a key signature of two sharps (F# and C#) and a 3/4 time signature. The melody consists of 10 notes: G4, A4, B4, C5, B4, A4, G4, F#4, E4, D4. There are two horizontal lines below the staff for barlines.

10

7 Add a clef and a key signature where needed to make each of the following scales. Write the solfa names below the notes. Mark the semitones with slurs.

C major



A musical staff with a treble clef and a key signature of one sharp (F#). The notes are: C4, D4, E4, F4, G4, A4, B4, C5. There are two horizontal lines below the staff for solfa names.

D major



A musical staff with a treble clef and a key signature of two sharps (F# and C#). The notes are: D4, E4, F#4, G4, A4, B4, C5, D5. There are two horizontal lines below the staff for solfa names.

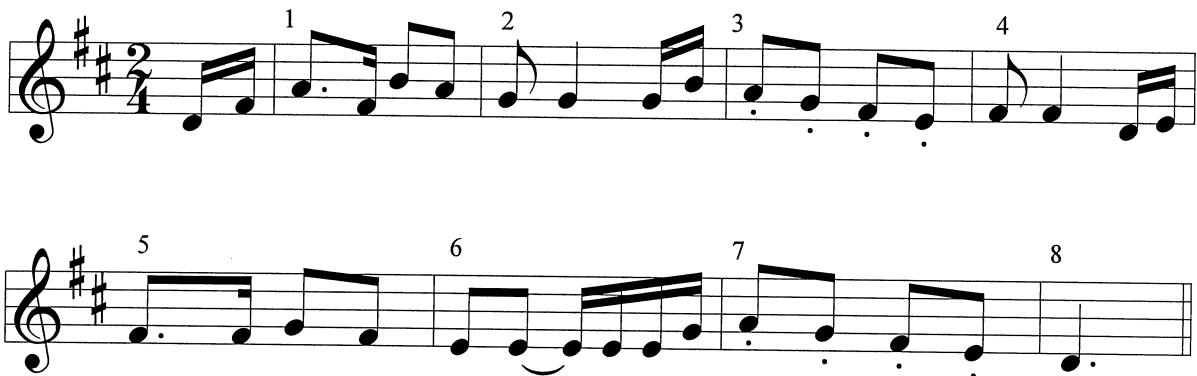
F major



A musical staff with a treble clef and a key signature of one sharp (F#). The notes are: F4, G4, A4, B4, C5, D5, E5, F6. There are two horizontal lines below the staff for solfa names.

10

Answer questions 8, 9 and 10 on the following tune 'Fly Little Bird' by Villa Lobos.



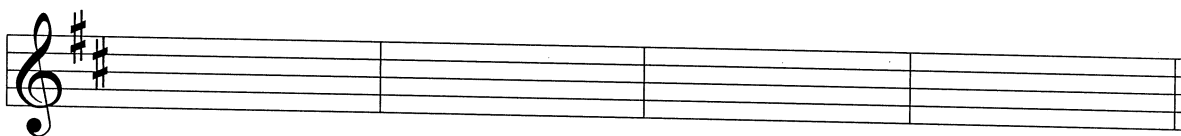
- 8 Write these signs and letters on the music:
- (i) Write a word at the beginning to show that it should be played at a walking pace.
 - (ii) Draw a sign below bar 3 to show that the music should gradually get louder.
 - (iii) Write a letter below bar 5 to show that the music is loud.
 - (iv) Draw a sign below bar 7 to show that the music should gradually get softer.
 - (v) Write a word to show that the music gets slower to finish above bar 7.

10

- 9 Fill in the blanks in these sentences:
- (i) The key of this piece is ____ major.
 - (ii) There are ____ beats in each bar.
 - (iii) The letter name of the lowest note is _____.
 - (iv) The dots under the notes mean to play _____.
 - (v) The dot after the note in bar 8 means _____.

10

- 10 Answer the following:
- (i) The shortest note value is a _____.
 - (ii) Bar 2 and bar ____ have the same rhythm.
 - (iii) Name one bar that moves only by step: _____
 - (iv) Copy bars 5, 6, 7 and 8 onto the stave below.



10
