

Local Centre Examination Paper

Theory Grade 6

November 2019

Time allowed : 3 hours

Candidates should answer all questions. All answers must be written on this paper.

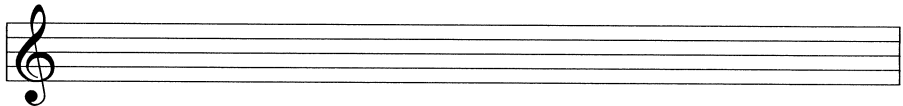


Candidate's name

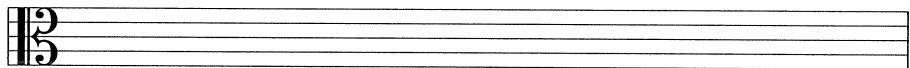
Total Marks 100

1 a Write one octave of each of the following scales using key signatures and any necessary accidentals. Note the changing clefs.

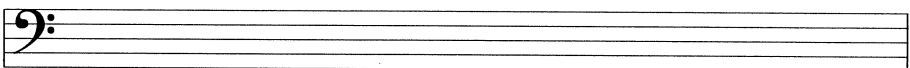
B $\flat$  melodic minor ascending



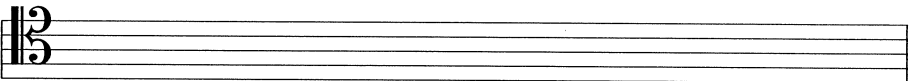
C $\flat$  major descending



G $\sharp$  harmonic minor ascending



B major descending



b Write each of these tonic triads using accidentals in the given clefs.

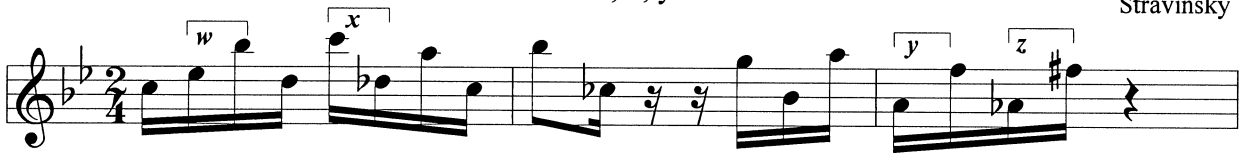


C $\sharp$  minor 1st inversion

D $\flat$  major 2nd inversion

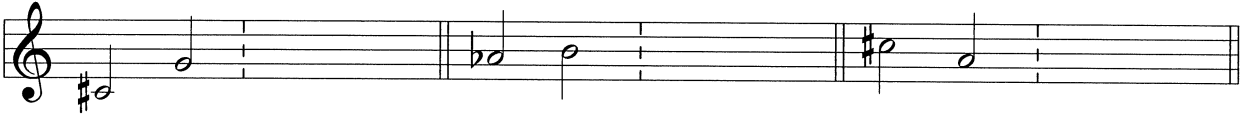
2 a Describe each of the marked intervals marked w, x, y and z.

Stravinsky



w \_\_\_\_\_ x \_\_\_\_\_ y \_\_\_\_\_ z \_\_\_\_\_

b Describe each of these intervals, then draw and describe the inversion of each one.



10

3 a Transpose the following melody down an octave using the tenor clef. Include the key signature.

Haydn



b Transpose the following melody down a minor 3rd. Include the new key signature.

Haydn



10

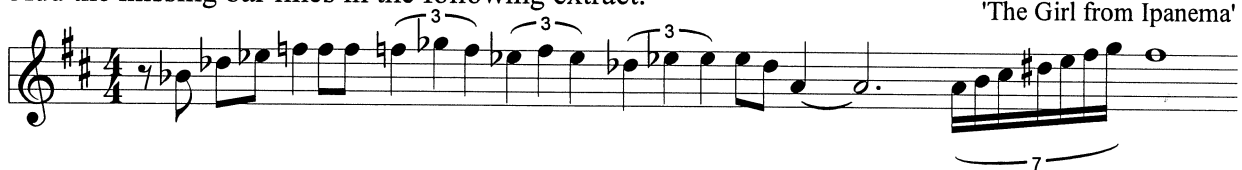
4a Name the key of the following extract. \_\_\_\_\_  
Add the missing time signature.

Couperin



b Add the missing bar lines in the following extract.

'The Girl from Ipanema'



10

5 a Complete these triads by adding a 3rd and a 5th above the given roots.

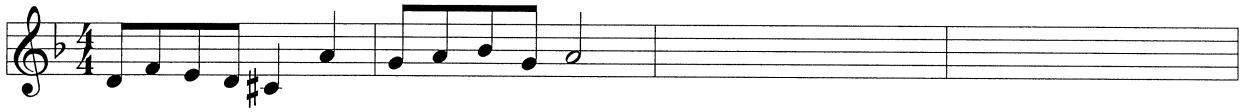
b Using a key signature write each of the primary triads in E minor.

c Add S.A.T. above these bass notes to form 4-part chords in root position. Identify each chord as being I, IV or V in A major.

d Name the key of this extract. Key \_\_\_\_\_  
Identify each chord marked \* by writing its roman numeral below the staff.

e Rewrite the passage in open score.

- 6 Using the given opening, compose a melody to make a total of 8 bars in D minor. Add suitable marks of tempo, phrasing and expression to the completed melody.

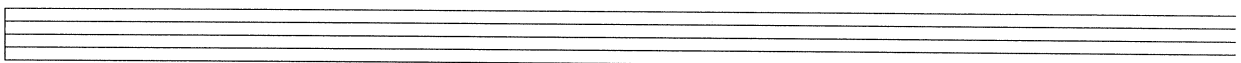
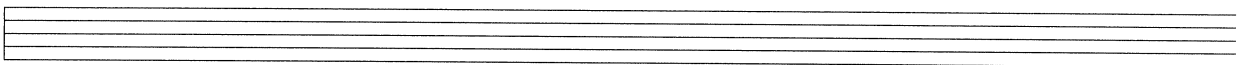
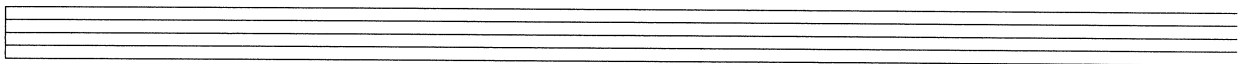
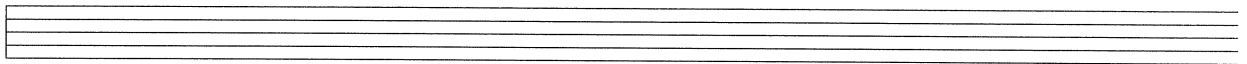


10

- 7 Write a rhythm for the following words. Copy the words onto the lines below the staves. Then write one note for each syllable. Include a time signature.

Come, let us remember the joys of the town;  
Gay vans and bright buses that roar up and down,  
Shop windows and playgrounds and swings in the park,  
And street lamps that twinkle in rows after dark.

*Doris Gill*



10

Study this keyboard excerpt then answer the questions which follow.

**Andante cantabile** Diabelli

- 8 a Name the key of the extract: \_\_\_\_\_
- b On the bass staff draw a circle around the notes of the tonic triad as follows:  
2nd inversion: bar \_\_\_\_\_ 1st inversion: bar \_\_\_\_\_.
- c Identify the chords marked \* as I, IV or V.  
bar 1 \_\_\_\_\_, bar 4 \_\_\_\_\_, bar 7 \_\_\_\_\_.
- d Name the ornaments in the treble of these bars:  
bar 5 \_\_\_\_\_ bar 6 \_\_\_\_\_ bar 7 \_\_\_\_\_
- e Name the circled intervals in these bars:  
bar 5 \_\_\_\_\_ bar 7 \_\_\_\_\_ bar 8 \_\_\_\_\_
- f Explain: **Andante cantabile** \_\_\_\_\_

9a Match each composer's name to the title of a work.

**Handel Vivaldi J.S.Bach Gluck Purcell**

Mass in B minor \_\_\_\_\_  
Dido and Aeneas \_\_\_\_\_  
Music for the Royal Fireworks \_\_\_\_\_  
The Seasons \_\_\_\_\_  
Orfeo \_\_\_\_\_

b Write a short paragraph about **one** of the following in relation to the Baroque Period.

**Opera Keyboard music Suite**

\_\_\_\_\_

\_\_\_\_\_

\_\_\_\_\_

\_\_\_\_\_

\_\_\_\_\_

10a Name the four main instruments in the woodwind section of the orchestra.

10

\_\_\_\_\_

b Match the 6 instruments to the 6 terms by writing an instrument name in each blank space.

**viola bassoon harp trumpet double bass timpani**

transposing \_\_\_\_\_  
percussion \_\_\_\_\_  
double reed \_\_\_\_\_  
alto clef \_\_\_\_\_  
uses 2 staves \_\_\_\_\_  
uses valves \_\_\_\_\_

5