

Time allowed : 1 hour

Candidates should answer all questions. All answers must be written on this paper.

Candidate's name

Total Marks 100

- 1 Draw the notes that make these words. The first one is done for you.

A musical staff with a treble clef and a bass clef. The first three notes are C, A, and B, each on a separate staff line. The next three notes are D, E, and A, each on a separate staff line. The last two notes are D and D, each on a separate staff line. The final note is F, on a separate staff line. The word 'CABEDADE' is written below the staff, with each letter under a note.

C A B D E A F D A D F A D E

10

- 2 Add the top number of the time signature to each tune.

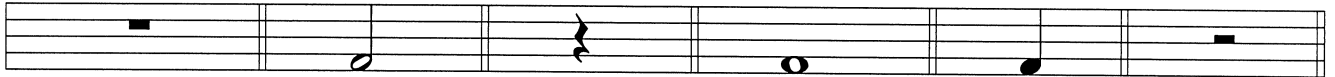
Three musical staves, each with a treble clef. The first staff has a time signature with a slash and a blank space. The second staff has a time signature with a slash and a blank space. The third staff has a time signature with a slash and a blank space. Each staff contains a sequence of notes: the first has a half note, the second has two quarter notes, the third has four eighth notes, the fourth has two quarter notes, the fifth has two quarter notes, and the sixth has a half note.

10

6 a Draw stems to make these notes minims.



b Write down the time name and value of each note or rest. The first one is done for you.

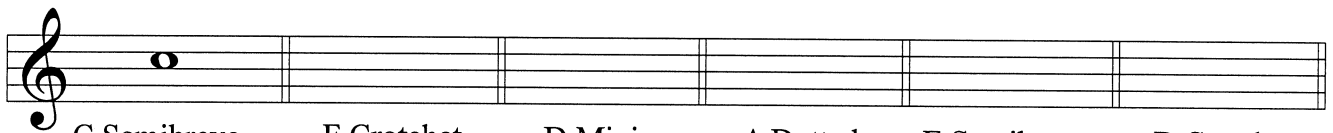


Semibreve rest

4 beats

10

7 Look at the clef sign. Draw the following notes. The first one on each line is done for you.



C Semibreve

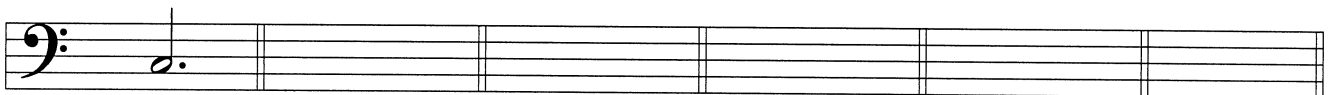
F Crotchet

D Minim

A Dotted
Minim

E Semibreve

B Crotchet



C Dotted
Half Note

G Quarter
Note

D Whole
Note

B Half
Note

E Quarter
Note

A Whole
Note

10

Questions 8, 9 and 10 are on the next page.
Please turn over the page now.

Study this melody. Then answer questions 8, 9 and 10.



8 Fill in the blanks.

The tune is written in the _____ clef. Its other name is the _____ clef. There are _____ beats in a bar. The letter name of the lowest note is _____. It is in bar _____. The highest note is _____. The longest note is a _____. It gets _____ beat(s). The rest in bar 5 is called a _____ rest. It gets _____ beat(s).

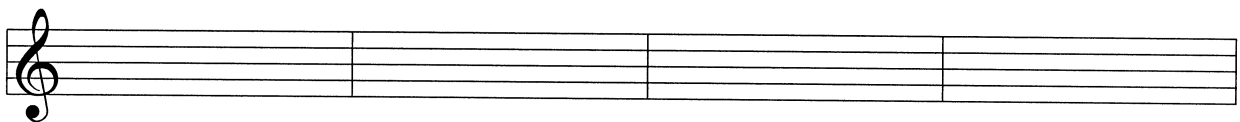
10

9 Draw a circle around either T (true) or F (false):.

- (i) The note A occurs 5 times. T F
- (ii) The rhythm of bar 2 is repeated in bar 7. T F
- (iii) There are 4 half notes in this tune. T F
- (iv) There are 2 crotchet rests in this tune. T F
- (v) Bars 5 and 6 have the same rhythm. T F

10

10 Copy the first line of the music (bars 1- 4) onto the staff below.



10