

Time allowed : 3 hours

Candidates should answer all questions. All answers must be written on this paper.

Candidate's name

Total Marks 100

- 1 Using roman numerals, indicate suitable chords to harmonise this melody.
Write the notes to form the bass line.

Swabian folksong

Senior Certificate continued

- 2 Using roman numerals, analyse the chording implied by the given soprano and bass lines. Complete the harmony by adding parts for alto and tenor voices.

20

- 3 Complete the following to make a two-part contrapuntal piece.

20

4 Study this S.A.T.B. harmonisation; then answer the questions that follow.

Jesu, deine tiefen Wunden

- a (i) Name the tonic key: _____
 (ii) Name the related keys through which the music passes in the boxed areas as follows:
 ↘ bar 2 _____ bar 10 - 11 _____
- b Using roman numerals describe the chords marked * in these bars.
 bar 3, beat 1 _____ bar 3, beat 4 _____
 bar 5, beat 2 _____ bar 12, beat 3 _____
- c Decorative notes are circled on the score. Identify the type of each as one of the following:
 Suspension. Unaccented passing note. Auxiliary note. Accented passing note. Appoggiatura.
 bar 1 (tenor) _____, bar 3 (bass) _____, bar 4 (tenor) _____
 bar 9 (tenor) _____, bar 12 (bass) _____.
- d (i) Name the type of cadence at bar 10, beat 3 to bar 11, beat 1: _____
 (ii) Find an imperfect cadence: bar _____ beats ___ & ___.

Score Extract

Sibelius

This musical score extract is for Sibelius and is written in 3/4 time with a key signature of two flats (B-flat and E-flat). The score is arranged for a full orchestra and includes the following parts:

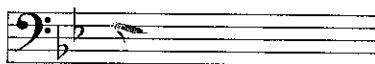
- Fl. (Flute):** Features a melodic line with a *p* dynamic marking.
- Ob. (Oboe):** Features a melodic line with *mf* and *mp* dynamic markings and triplet markings.
- Clar. (Clarinet):** Features a melodic line with *mf* and *mp* dynamic markings and triplet markings.
- Fag. (Bassoon):** Features a melodic line with *mp* dynamic markings.
- Corni (Horn):** Features a melodic line with *mf* and *mp* dynamic markings.
- Timp. (Timpani):** Features a rhythmic pattern with *mf* dynamic markings and triplet markings.
- Arpa (Arpa):** Features a melodic line with *mf* and *mp* dynamic markings.
- Viol. I (Violin I):** Features a melodic line with *mf* dynamic markings.
- Viol. II (Violin II):** Features a melodic line with *p* dynamic markings and triplet markings.
- Alti (Viola):** Features a melodic line with *p* dynamic markings and triplet markings.
- Vcelli (Cello):** Features a melodic line with *p* dynamic markings and triplet markings.
- C.B. (Double Bass):** Features a rhythmic pattern with *p* dynamic markings and triplet markings.

5 Study the extract on page 4 from the second movement of symphony No. 6 by Sibelius. Then answer the following questions.

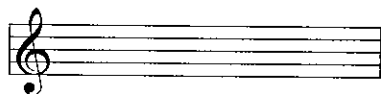
a List the names of all the instruments on the score, in English.

Fl. _____	Arpa _____
Ob. _____	Viol.I _____
Clar. _____	Viol.II _____
Fag. _____	Alti _____
Corni _____	Vcelli _____
Timp. _____	C.B. _____

b Write out bar 1 of the viola part in the bass clef.



c Write out bar 1 of the clarinet parts at concert pitch. Clarinets are in B flat.



d Write out bar 1 of the horn parts at concert pitch. Horns are in F.



e Explain the following in relation to the score: (C.B. part)



Senior Certificate continued

6a Name the composer of any three of the works listed below. In each case, give the nationality of the composer and also the type of work named, choosing from these possibilities:-

orchestral, operatic, ballet, song cycle, choral, mixed ensemble.

Works	Composer	Nationality	type of work
Rite of spring	_____	_____	_____
Wozzeck	_____	_____	_____
Pelleas et Melisande	_____	_____	_____
Drumming	_____	_____	_____
Fanfare for the Common Man	_____	_____	_____
Kindertotenlied er	_____	_____	_____

b Write an informative paragraph on the works and musical style of any major 20th century composer of your choice.
