

RIAM Music Theory Examination Paper

Senior Certificate

May 2025

Candidates should answer all questions. All answers must be written on this paper.

Candidate's name: \_\_\_\_\_ Total marks: 100

- 1 Using roman numerals, indicate suitable chords to harmonise this melody.  
Write the notes to form the bass line.

*'Bushes and Briars'*

- 2 Using roman numerals, analyse the chording implied by the given soprano and bass lines. Complete the harmony by adding parts for alto and tenor voices.

20

- 3 Complete the following to make a two-part contrapuntal piece.

4 Study this SATB harmonisation; then answer the questions that follow.

*Bach*

- a (i) Name the tonic key: \_\_\_\_\_  
 (ii) Name the key to which the music modulates in the boxed area in bar 6: \_\_\_\_\_

b Find one example of each of the following. Give the bar and beat numbers.

- |  |                    |             |
|--|--------------------|-------------|
| Suspension                                       | Bar ____ Beat ____ | Voice _____ |
| Unaccented passing note                          | Bar ____ Beat ____ | Voice _____ |
| Auxiliary note                                   | Bar ____ Beat ____ | Voice _____ |
| Tierce de Picardi                                | Bar ____ Beat ____ | Voice _____ |
| Phrygian cadence                                 | Bar ____ Beat ____ | Voice _____ |
| Dominant 7th chord in a key other than the tonic | Bar ____ Beat ____ |             |

c Describe the boxed chords using roman numerals:

- Bar 4, beat 2 \_\_\_\_\_  
 Bar 5, beat 3 \_\_\_\_\_  
 Bar 7, beat 4 \_\_\_\_\_  
 Bar 8, beat 3 \_\_\_\_\_  
 Bar 8, beat 4 \_\_\_\_\_

- 5** Study the extract on the opposite page from George Gershwin's 'An American in Paris'.  
Then answer the following questions.

- a** Explain the following terms and signs:

arco	_____
>	_____
a2	_____
Vigoroso	_____
sul G	_____
espr.	_____
Giocoso	_____

- b** Name the transposing instruments on the score belonging to the woodwind section.

\_\_\_\_\_

- c** Name the pitched instrument(s) listed on the score belonging to the percussion section.

\_\_\_\_\_

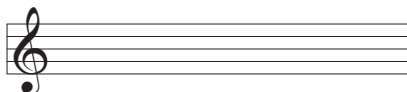
- d** Name the clef used by the viola: \_\_\_\_\_

Write out bar 1 of the viola part in the treble clef.



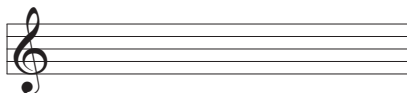
- e** Clarinets are pitched in B flat.

Write out bar 6 of their part at concert pitch using the appropriate key signature.



- f** The English Horn is pitched in F.

Write out bar 6 of its part at concert pitch using the appropriate key signature.



# An American in Paris

Gershwin

**Vigoroso**

Piccolo

Flute

Oboe

English Horn

Clarinet in B $\flat$

Bass Clarinet

Bassoon

Timpani

Snare Drum

Cymbals

Bass Drum

Xylophone

**Vigoroso**

Violin I

Violin II

Viola

Cello

Contrabass

**Giocoso**

a2

a2

sul G

espr.

arco

**6 a** Briefly define **three** of the following terms. In each case, give the name of a composer who uses the feature and the name of a work by them where the feature can be found.

**Serialism   Electronic Music   Minimalism   Jazz   Pointillism   Extended Performance Techniques**

Topic 1: \_\_\_\_\_  
\_\_\_\_\_  
\_\_\_\_\_

Composer: \_\_\_\_\_ Work: \_\_\_\_\_

Topic 2: \_\_\_\_\_  
\_\_\_\_\_  
\_\_\_\_\_

Composer: \_\_\_\_\_ Work: \_\_\_\_\_

Topic 3: \_\_\_\_\_  
\_\_\_\_\_  
\_\_\_\_\_

Composer: \_\_\_\_\_ Work: \_\_\_\_\_

**b** Name a work by any **three** of the composers listed below.

Bernstein	_____
Debussy	_____
Cage	_____
Ravel	_____
Schoenberg	_____
Shostakovich	_____
Steve Reich	_____